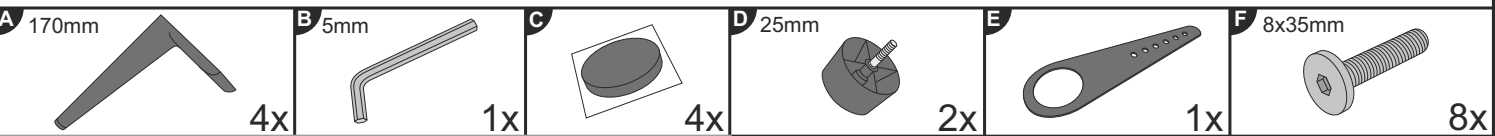
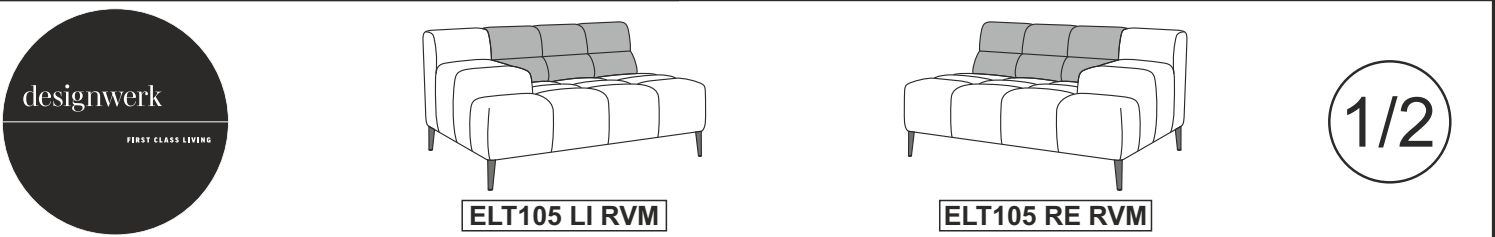


<b>2X</b>	<b>10 MIN</b>				
-----------	---------------	--	--	--	--

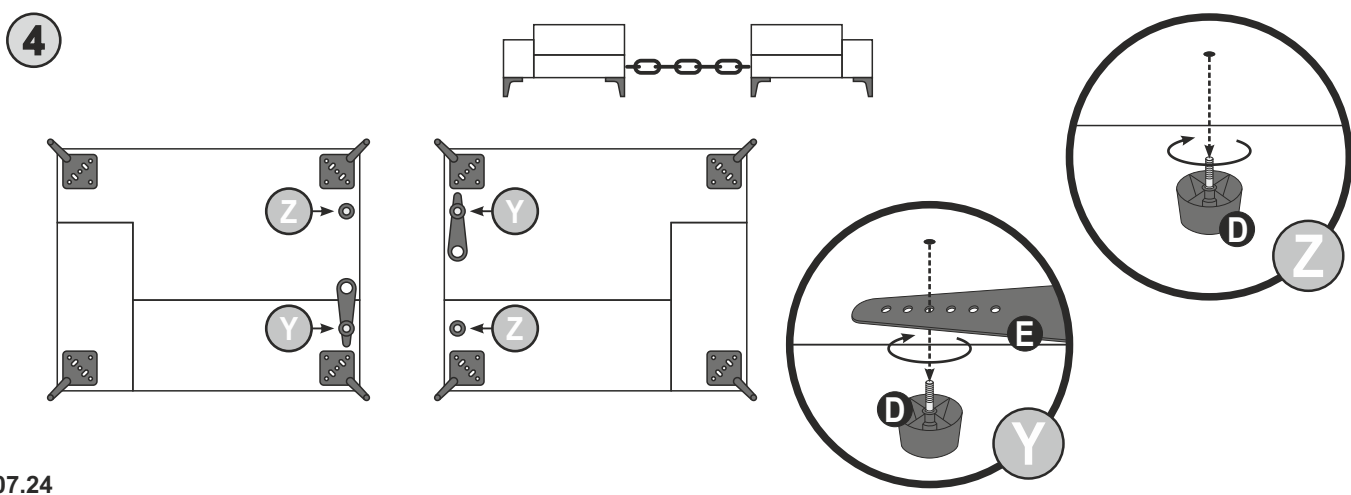
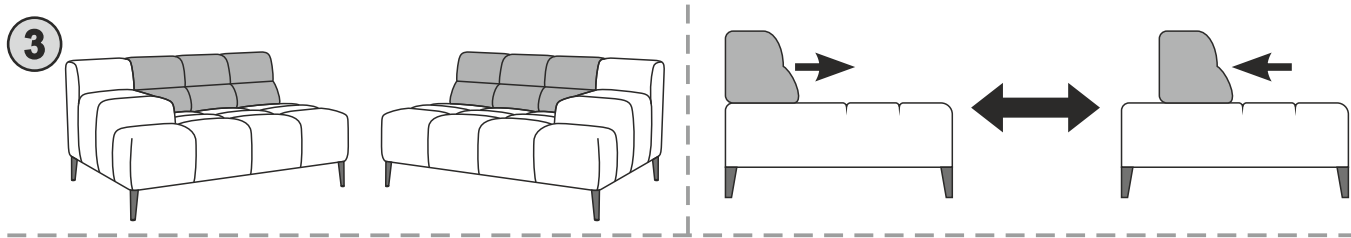
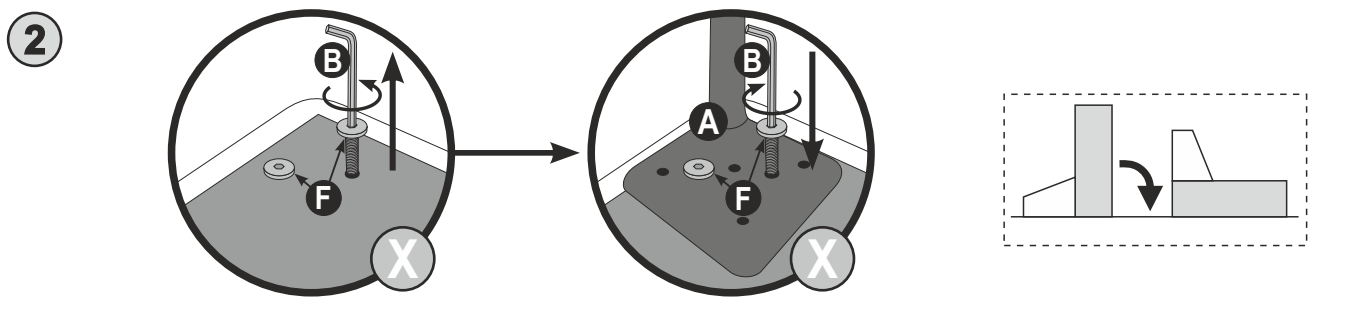
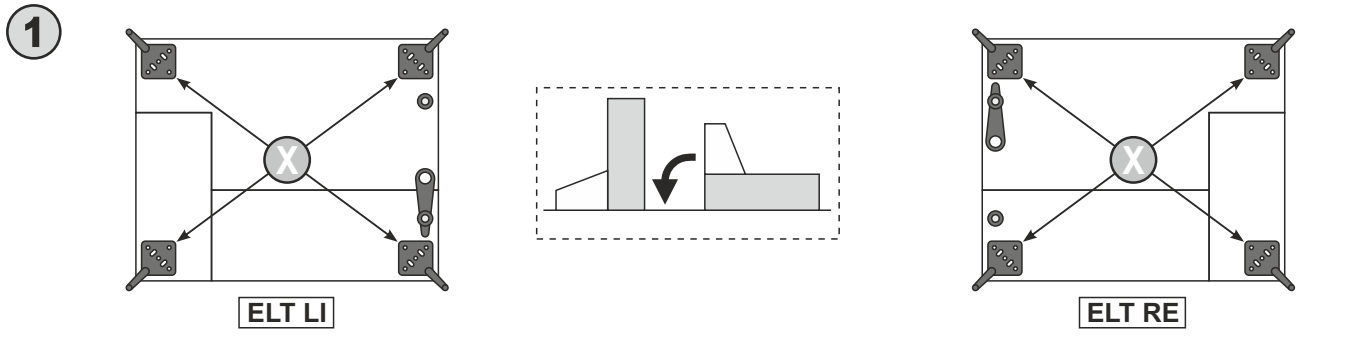
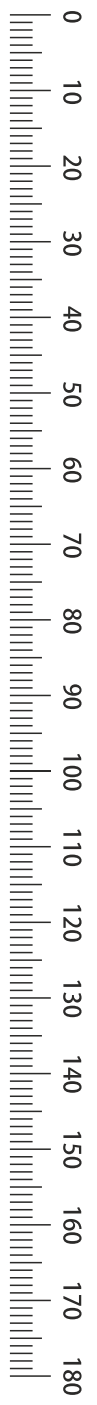
- |   |                                      |
|---|--------------------------------------|
| <b>(D)</b> AUFBAUANLEITUNG              | <b>(GB)</b> ASSEMBLY INSTRUCTIONS    |
| <b>(NL)</b> HANDLEIDING VOOR DE MONTAGE | <b>(PL)</b> INSTRUKCJA MONTAŻU       |
| <b>(TR)</b> MONTAJ TALIMATI             | <b>(RU)</b> Инструкция по монтажу    |
| <b>(RO)</b> INSTRUCIUNI DE ASAMBLARE    | <b>(I)</b> PROCEDURA DI ASSEMBLAGGIO |
| <b>(F)</b> INSTRUCTION D'ASSEMBLAGE     | <b>(SK)</b> POKYNY K MONTÁŽI         |
| <b>(CZ)</b> POKYNY K MONTÁŽI            | <b>(HU)</b> KÖZGYŰLÉS UTASÍTÁSOK     |
| <b>(BG)</b> ИНСТРУКЦИИ ЗА МОНТАЖ        | <b>(SLO)</b> ASSEMBLY INSTRUCTIONS   |
| <b>(HR)</b> NAPUTCI ZA MONTAŽU          | <b>(S)</b> MONTERINGSANVISNING       |
| <b>(E)</b> INSTRUCCIONES DE MONTAJE     | <b>(LT)</b> DIEGIMO INSTRUKCIJOS     |

MODEL **“LIAM”**



HARDWARE BAG / SACHET MATÉRIEL / ZUBEHÖRBEUTEL / SACCHETTI MATERIALE / BOLSA DE MATERIALES / WOREK MATERIALOWY

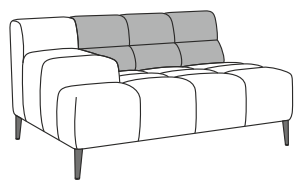
PRE-ASSEMBLED / PRÉ ASSEMBLÉ / VORMONTIERT / PREMONTATO / WSTĘPNIE ZAMONTOWANE



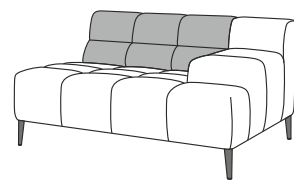
<b>2X</b>	<b>10 MIN</b>				
					<b>130kg MAX</b>

- |                                       |                                    |
|---------------------------------------|------------------------------------|
| <b>D</b> AUFBAUANLEITUNG              | <b>GB</b> ASSEMBLY INSTRUCTIONS    |
| <b>NL</b> HANDLEIDING VOOR DE MONTAGE | <b>PL</b> INSTRUKCJA MONTAŻU       |
| <b>TR</b> MONTAJ TALIMATI             | <b>RU</b> Инструкция по монтажу    |
| <b>RO</b> INSTRUCTIUNI DE ASAMBLARE   | <b>I</b> PROCEDURA DI ASSEMBLAGGIO |
| <b>F</b> INSTRUCTION D'ASSEMBLAGE     | <b>SK</b> POKYNY K MONTÁŽI         |
| <b>CZ</b> POKYNY K MONTÁŽI            | <b>HU</b> KÖZGYŰLÉS UTASÍTÁSOK     |
| <b>BG</b> ИНСТРУКЦИИ ЗА МОНТАЖ        | <b>SLO</b> ASSEMBLY INSTRUCTIONS   |
| <b>HR</b> NAPUTCI ZA MONTAŽU          | <b>S</b> MONTERINGSANVISNING       |
| <b>E</b> INSTRUCCIONES DE MONTAJE     | <b>LT</b> DIEGIMO INSTRUKCIJOS     |

MODEL "LIAM"



ELT105 LI RVM



ELT105 RE RVM

2/2

<b>A</b> 170mm  4x	<b>B</b> 5mm  1x	<b>C</b>  4x	<b>D</b> 25mm  2x	<b>E</b>  1x	<b>F</b> 8x35mm  8x
--------------------------	------------------------	--------------------	-------------------------	--------------------	---------------------------

HARDWARE BAG / SACHET MATÉRIEL / ZUBEHÖRBEUTEL / SACCHETTI MATERIALE / BOLSA DE MATERIALES / WOREK MATERIALOWY

PRE-ASSEMBLED / PRÉ ASSEMBLÉ / VORMONTIERT / PREMONTATO / WSTĘPNIE ZAMONTOWANE

0  
10  
20  
30  
40  
50  
60  
70  
80  
90  
100  
110  
120  
130  
140  
150  
160  
170  
180

**5**

**6**

Le produit destiné à un usage domestique.  
Après assemblage de ce produit, il est conseillé d'aérer régulièrement la pièce pendant.

The product is intended for domestic use.  
After assembling this product, it is advisable to ventilate the room regularly for a few days.



**FR**  
Pensez à donner ou recycler.



Association ou Magasin ou Déchèterie



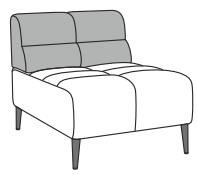
**LE TRI FACILE**



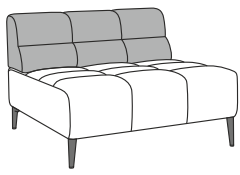
<b>2X</b>	<b>10 MIN</b>				
-----------	---------------	--	--	--	--

- |                                  |                               |
|----------------------------------|-------------------------------|
| (D) AUFBAUANLEITUNG              | (GB) ASSEMBLY INSTRUCTIONS    |
| (NL) HANDLEIDING VOOR DE MONTAGE | (PL) INSTRUKCJA MONTAŻU       |
| (TR) MONTAJ TALIMATI             | (RU) Инструкция по монтажу    |
| (RO) INSTRUCIUNI DE ASAMBLARE    | (I) PROCEDURA DI ASSEMBLAGGIO |
| (F) INSTRUCTION D'ASSEMBLAGE     | (SK) POKYNY K MONTÁŽI         |
| (CZ) POKYNY K MONTÁŽI            | (HU) KÖZGYŰLÉS UTASÍTÁSOK     |
| (BG) ИНСТРУКЦИИ ЗА МОНТАЖ        | (SLO) ASSEMBLY INSTRUCTIONS   |
| (HR) NAPUTCI ZA MONTAŽU          | (S) MONTERINGSANVISNING       |
| (E) INSTRUCCIONES DE MONTAJE     | (LT) DIEGIMO INSTRUKCIJOS     |

MODEL "LIAM"



ELT70 RVM



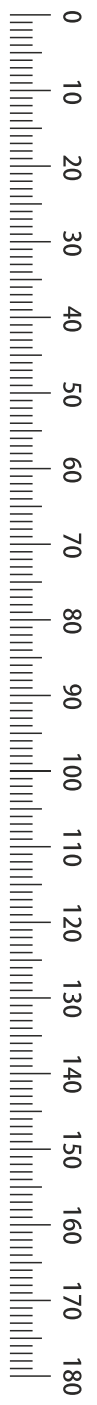
ELT105 RVM

1/2

<b>A</b> 170mm  4x	<b>B</b> 5mm  1x	<b>C</b>  4x	<b>D</b> 25mm  4x	<b>E</b>  2x	<b>F</b> 8x35mm  8x
--------------------------	------------------------	--------------------	-------------------------	--------------------	---------------------------

HARDWARE BAG / SACHET MATÉRIEL / ZUBEHÖRBEUTEL / SACCHETTI MATERIALE / BOLSA DE MATERIALES / WOREK MATERIALOWY

PRE-ASSEMBLED/ PRÉ ASSEMBLÉ/ VORMONTIERT/ PREMONTATO/ WSTĘPNIE ZAMONTOWANE



**1**

**2**

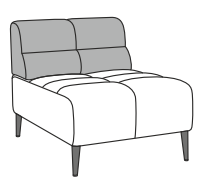
**3**

**4**

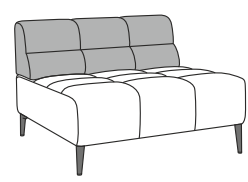
<b>2X</b> 	<b>10 MIN</b> 		<b>130kg MAX</b> 
---------------	-------------------	--	----------------------

- |                                       |                                    |
|---------------------------------------|------------------------------------|
| <b>D</b> AUFBAUANLEITUNG              | <b>GB</b> ASSEMBLY INSTRUCTIONS    |
| <b>NL</b> HANDLEIDING VOOR DE MONTAGE | <b>PL</b> INSTRUKCJA MONTAŻU       |
| <b>TR</b> MONTAJ TALIMATI             | <b>RU</b> Инструкция по монтажу    |
| <b>RO</b> INSTRUCTIUNI DE ASAMBLARE   | <b>I</b> PROCEDURA DI ASSEMBLAGGIO |
| <b>F</b> INSTRUCTION D'ASSEMBLAGE     | <b>SK</b> POKYNY K MONTÁŽI         |
| <b>CZ</b> POKYNY K MONTÁŽI            | <b>HU</b> KÖZGYŰLÉS UTASÍTÁSOK     |
| <b>BG</b> ИНСТРУКЦИИ ЗА МОНТАЖ        | <b>SLO</b> ASSEMBLY INSTRUCTIONS   |
| <b>HR</b> NAPUTCI ZA MONTAŽU          | <b>S</b> MONTERINGSANVISNING       |
| <b>E</b> INSTRUCCIONES DE MONTAJE     | <b>LT</b> DIEGIMO INSTRUKCIJOS     |

MODEL **“LIAM”**



**ELT70 RVM**



**ELT105 RVM**

**2/2**

<b>A</b> #70170mm  4x	<b>B</b> 5mm  1x	<b>C</b>  4x	<b>D</b> 25mm  4x	<b>E</b>  2x	<b>F</b> 8x35mm  8x
-----------------------------	------------------------	--------------------	-------------------------	--------------------	---------------------------

HARDWARE BAG / SACHET MATÉRIEL / ZUBEHÖRBEUTEL / SACCHETTI MATERIALE / BOLSA DE MATERIALES / WOREK MATERIALOWY

PRE-ASSEMBLED/ PRÉ ASSEMBLÉ/ VORMONTIERT/ PREMONTATO/ WSTĘPNIE ZAMONTOWANE

**5**

**6**

Le produit destiné à un usage domestique.  
Après assemblage de ce produit, il est conseillé d'aérer régulièrement la pièce pendant.

The product is intended for domestic use.  
After assembling this product, it is advisable to ventilate the room regularly for a few days.



**FR**  
Pensez à donner ou recycler.



Association ou Magasin ou Déchèterie



**LE TRI + FACILE**



2X

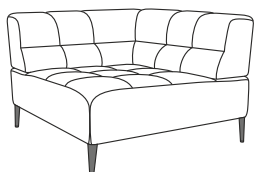
10 MIN



- (D) AUFBAUANLEITUNG
- (NL) HANDLEIDING VOOR DE MONTAGE
- (TR) MONTAJ TALIMATI
- (RO) INSTRUCIUNI DE ASAMBLARE
- (F) INSTRUCTION D'ASSEMBLAGE
- (CZ) POKYNY K MONTÁŽI
- (BG) ИНСТРУКЦИИ ЗА МОНТАЖ
- (HR) NAPUTCI ZA MONTAŽU
- (E) INSTRUCCIONES DE MONTAJE

- (GB) ASSEMBLY INSTRUCTIONS
- (PL) INSTRUKCJA MONTAŻU
- (RU) Инструкция по монтажу
- (I) PROCEDURA DI ASSEMBLAGGIO
- (SK) POKYNY K MONTÁŽI
- (HU) KÖZGYŰLÉS UTASÍTÁSOK
- (SLO) ASSEMBLY INSTRUCTIONS
- (S) MONTERINGSANVISNING
- (LT) DIEGIMO INSTRUKCIJOS

MODEL "LIAM"



ECKE

1/2

<b>A</b> 170mm  4x	<b>B</b> 5mm  1x	<b>C</b>  4x	<b>D</b> 25mm  4x	<b>E</b>  2x	<b>F</b> 8x35mm  8x
--------------------------	------------------------	--------------------	-------------------------	--------------------	---------------------------

HARDWARE BAG / SACHET MATÉRIEL / ZUBEHÖRBEUTEL / SACCHETTI MATERIALE / BOLSA DE MATERIALES / WOREK MATERIALOWY

PRE-ASSEMBLED/ PRÉ ASSEMBLÉ/ VORMONTIERT/ PREMONTATO/ WSTĘPNIE ZAMONTOWANE

0 10 20 30 40 50 60 70 80 90 100 110 120 130 140 150 160 170 180

**1**

**2**

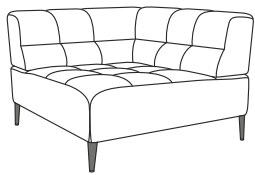
**3**

**4**

<b>2X</b>	<b>10 MIN</b>				
-----------	---------------	--	--	--	--

- |   |                                      |
|---|--------------------------------------|
| <b>(D)</b> AUFBAUANLEITUNG              | <b>(GB)</b> ASSEMBLY INSTRUCTIONS    |
| <b>(NL)</b> HANDLEIDING VOOR DE MONTAGE | <b>(PL)</b> INSTRUKCJA MONTAŻU       |
| <b>(TR)</b> MONTAJ TALIMATI             | <b>(RU)</b> Инструкция по монтажу    |
| <b>(RO)</b> INSTRUCIUNI DE ASAMBLARE    | <b>(I)</b> PROCEDURA DI ASSEMBLAGGIO |
| <b>(F)</b> INSTRUCTION D'ASSEMBLAGE     | <b>(SK)</b> POKYNY K MONTÁŽI         |
| <b>(CZ)</b> POKYNY K MONTÁŽI            | <b>(HU)</b> KÖZGYŰLÉS UTASÍTÁSOK     |
| <b>(BG)</b> ИНСТРУКЦИИ ЗА МОНТАЖ        | <b>(SLO)</b> ASSEMBLY INSTRUCTIONS   |
| <b>(HR)</b> NAPUTCI ZA MONTAŽU          | <b>(S)</b> MONTERINGSANVISNING       |
| <b>(E)</b> INSTRUCCIONES DE MONTAJE     | <b>(LT)</b> DIEGIMO INSTRUKCIJOS     |

MODEL **“LIAM”**



**ECKE**

**2/2**

<b>A</b> 170mm  4x	<b>B</b> 5mm  1x	<b>C</b>  4x	<b>D</b> 25mm  4x	<b>E</b>  2x	<b>F</b> 8x35mm  8x
--------------------------	------------------------	--------------------	-------------------------	--------------------	---------------------------

HARDWARE BAG / SACHET MATÉRIEL / ZUBEHÖRBEUTEL / SACCHETTI MATERIALE / BOLSA DE MATERIALES / WOREK MATERIALOWY

PRE-ASSEMBLED/ PRÉ ASSEMBLÉ/ VORMONTIERT/ PREMONTATO/ WSTĘPNIE ZAMONTOWANE

0  
10  
20  
30  
40  
50  
60  
70  
80  
90  
100  
110  
120  
130  
140  
150  
160  
170  
180

**5**

---

70  
80  
90  
100  
110  
120  
130  
140  
150  
160  
170  
180

**6**

Le produit destiné à un usage domestique.  
Après assemblage de ce produit, il est conseillé d'aérer régulièrement la pièce pendant.

The product is intended for domestic use.  
After assembling this product, it is advisable to ventilate the room regularly for a few days.

 <b>FR</b> Pensez à donner ou recycler.	Association	ou	Magasin	ou	Déchèterie		<b>LE TRI FACILE</b>	
---	-------------	----	---------	----	------------	--	----------------------	--

**2X****10 MIN**

(D) AUFBAUANLEITUNG  
 (NL) HANDLEIDING VOOR DE MONTAGE  
 (TR) MONTAJ TALIMATI  
 (RO) INSTRUCIUNI DE ASAMBLARE  
 (F) INSTRUCTION D'ASSEMBLAGE  
 (CZ) POKYNY K MONTÁŽI  
 (BG) ИНСТРУКЦИИ ЗА МОНТАЖ  
 (HR) NAPUTCI ZA MONTAŽU  
 (E) INSTRUCCIONES DE MONTAJE

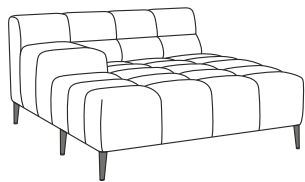
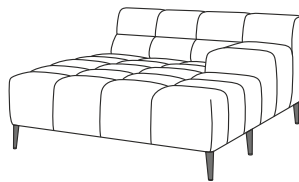
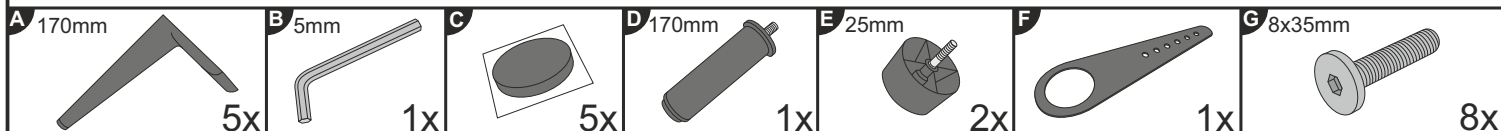
(GB) ASSEMBLY INSTRUCTIONS  
 (PL) INSTRUKCJA MONTAŻU  
 (RU) Инструкция по монтажу  
 (I) PROCEDURA DI ASSEMBLAGGIO  
 (SK) POKYNY K MONTÁŽI  
 (HU) KÖZGYŰLÉS UTASÍTÁSOK  
 (SLO) ASSEMBLY INSTRUCTIONS  
 (S) MONTERINGSANVISNING  
 (LT) DIEGIMO INSTRUKCIJOS

MODEL

**“LIAM”**

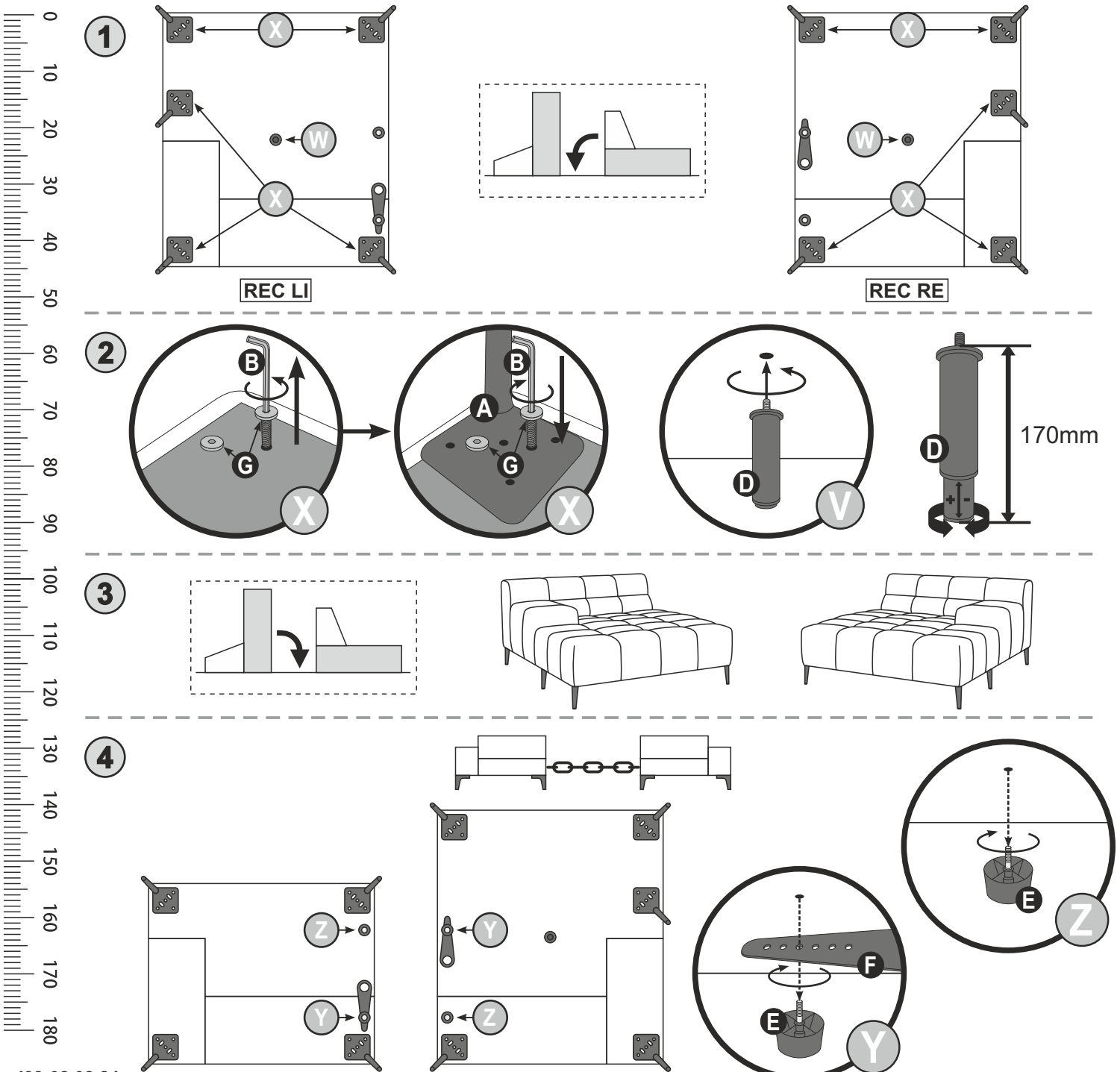
designwerk

FIRST CLASS LIVING

**REC LI****REC RE****1/2**

HARDWARE BAG / SACHET MATÉRIEL / ZUBEHÖRBEUTEL /  
 SACCHETTI MATERIALE / BOLSA DE MATERIALES / WOREK MATERIALOWY

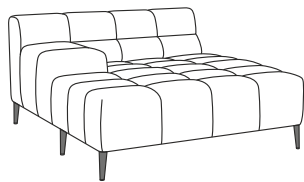
PRE-ASSEMBLED/ PRÉ ASSEMBLÉ/ VORMONTIERT/  
 PREMONTATO/ WSTĘPIE ZAMONTOWANE



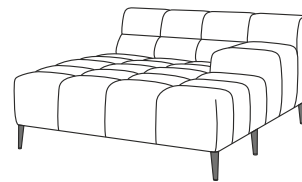
<b>2X</b>	<b>10 MIN</b>				
-----------	---------------	--	--	--	--

- |                                       |                                    |
|---------------------------------------|------------------------------------|
| <b>D</b> AUFBAUANLEITUNG              | <b>GB</b> ASSEMBLY INSTRUCTIONS    |
| <b>NL</b> HANDLEIDING VOOR DE MONTAGE | <b>PL</b> INSTRUKCJA MONTAŻU       |
| <b>TR</b> MONTAJ TALIMATI             | <b>RU</b> Инструкция по монтажу    |
| <b>RO</b> INSTRUCTIUNI DE ASAMBLARE   | <b>I</b> PROCEDURA DI ASSEMBLAGGIO |
| <b>F</b> INSTRUCTION D'ASSEMBLAGE     | <b>SK</b> POKYNY K MONTÁŽI         |
| <b>CZ</b> POKYNY K MONTÁŽI            | <b>HU</b> KÖZGYŰLÉS UTASÍTÁSOK     |
| <b>BG</b> ИНСТРУКЦИИ ЗА МОНТАЖ        | <b>SLO</b> ASSEMBLY INSTRUCTIONS   |
| <b>HR</b> NAPUTCI ZA MONTAŽU          | <b>S</b> MONTERINGSANVISNING       |
| <b>E</b> INSTRUCCIONES DE MONTAJE     | <b>LT</b> DIEGIMO INSTRUKCIJOS     |

MODEL **"LIAM"**



**REC LI**



**REC RE**

**2/2**

<b>A</b> 170mm  5x	<b>B</b> 5mm  1x	<b>C</b>  5x	<b>D</b> 170mm  5x	<b>E</b> 25mm  2x	<b>F</b>  1x	<b>G</b> 8x35mm  8x
HARDWARE BAG / SACHET MATÉRIEL / ZUBEHÖRBEUTEL / SACCHETTI MATERIALE / BOLSA DE MATERIALES / WOREK MATERIALOWY				PRE-ASSEMBLED/ PRÉ ASSEMBLÉ/ VORMONTIERT/ PREMONTATO/ WSTĘPNIE ZAMONTOWANE		

**5**

**6**

Le produit destiné à un usage domestique.  
Après assemblage de ce produit, il est conseillé d'aérer régulièrement la pièce pendant.

The product is intended for domestic use.  
After assembling this product, it is advisable to ventilate the room regularly for a few days.

**FR**

Pensez à donner ou recycler.

Association ou Magasin ou Déchèterie

**LE TRI + FACILE**

BAC DE TRI

103-08.08.24

<https://quefairedemesdechets.fr>